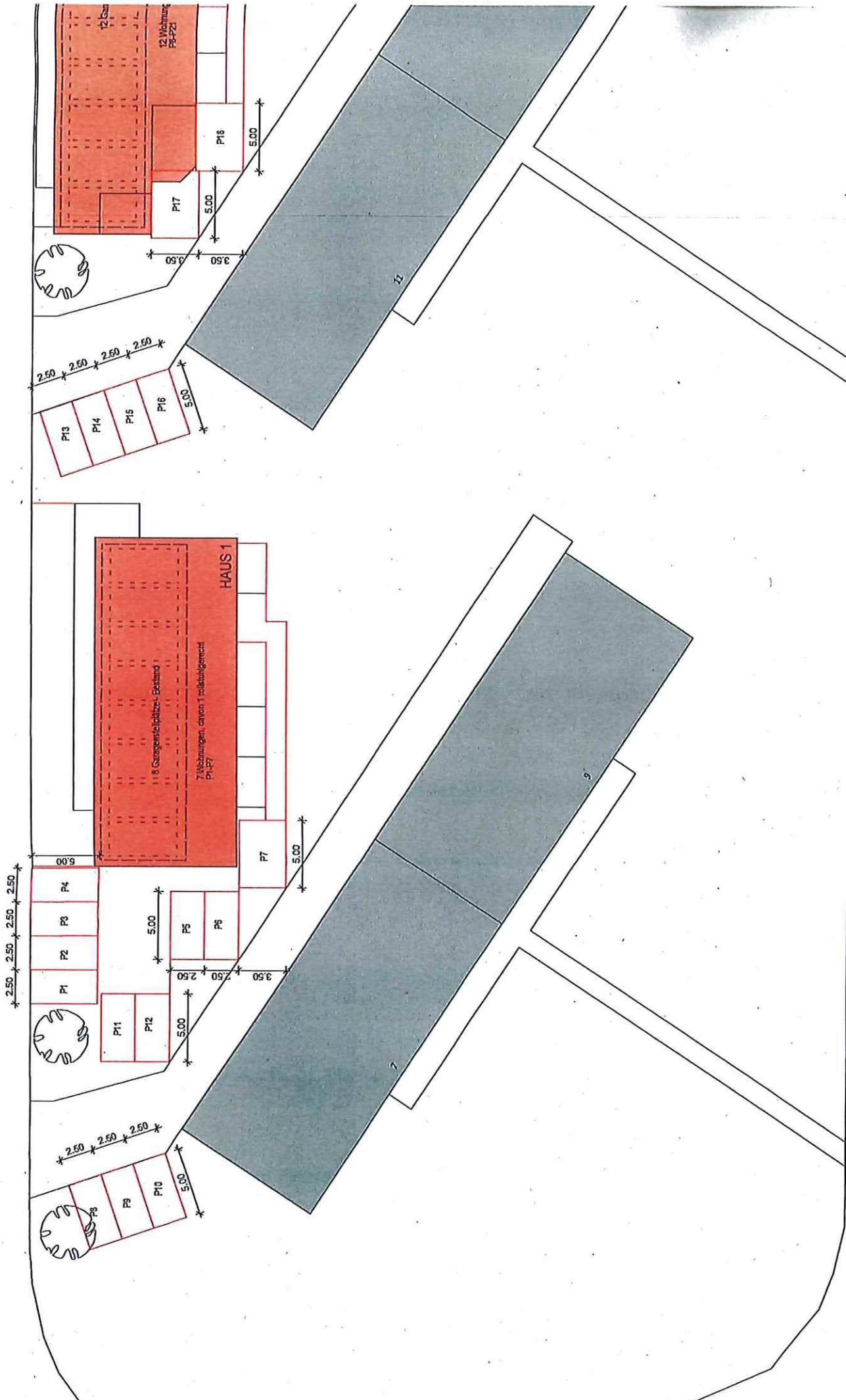
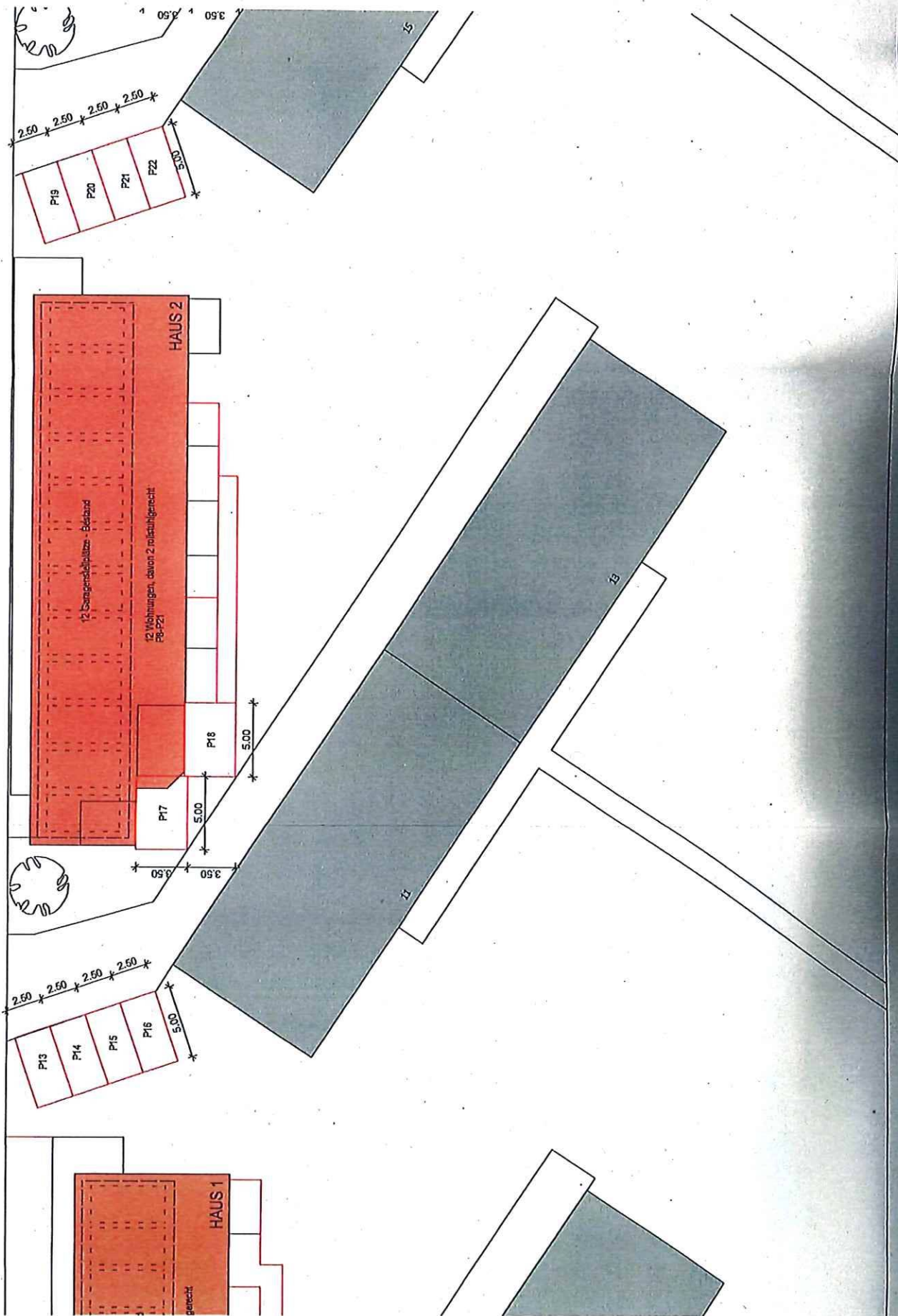


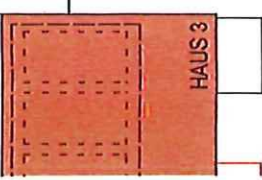
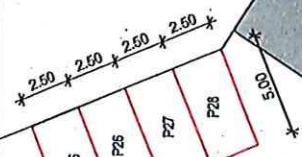
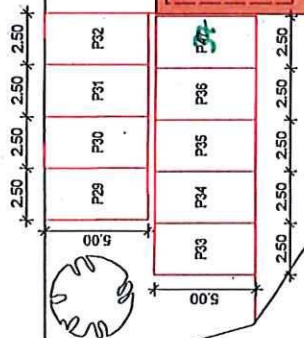
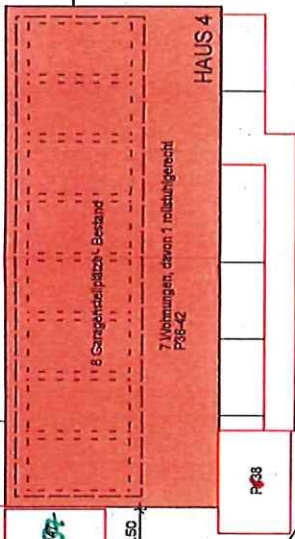
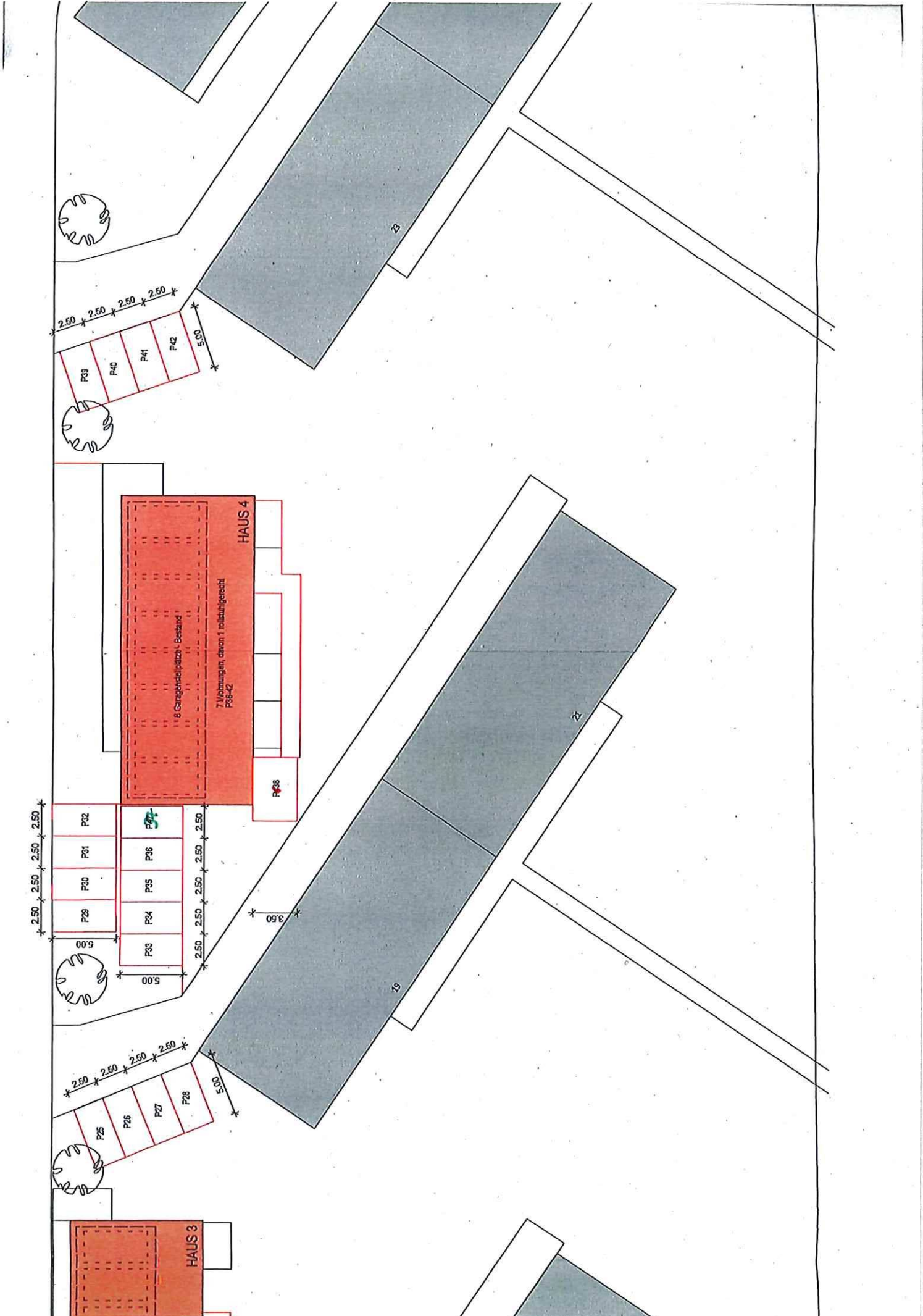
Geltungsbereich  
Bebauungsplan Nr. 340:  
„Städtebauliche Neuordnung der  
Niederberger Höhe“,  
M. = 1:3.500

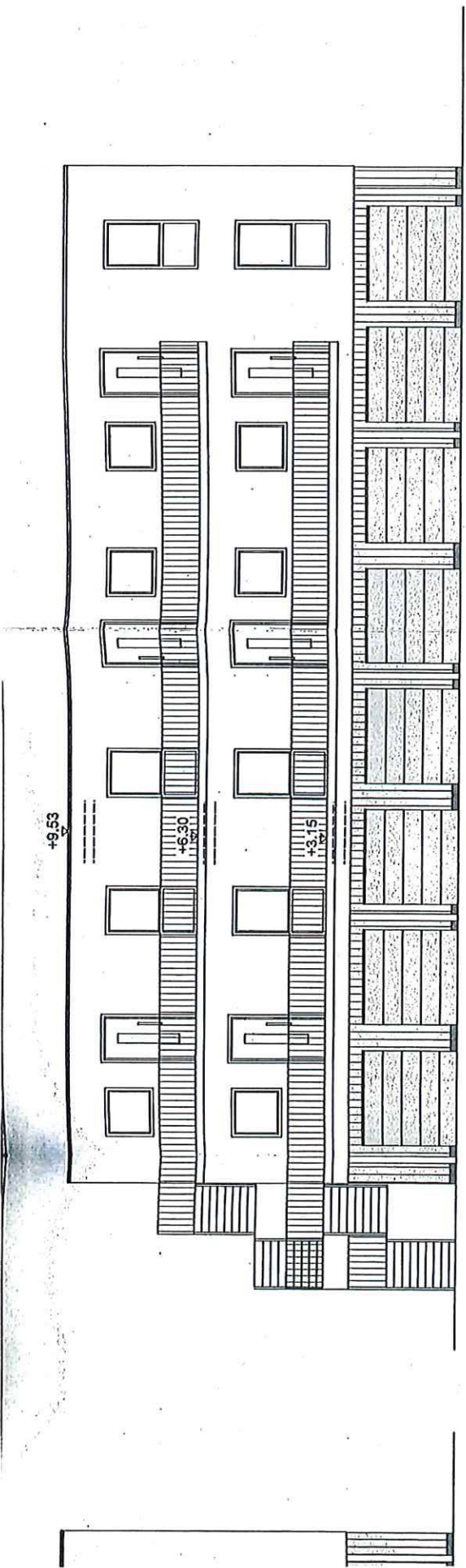




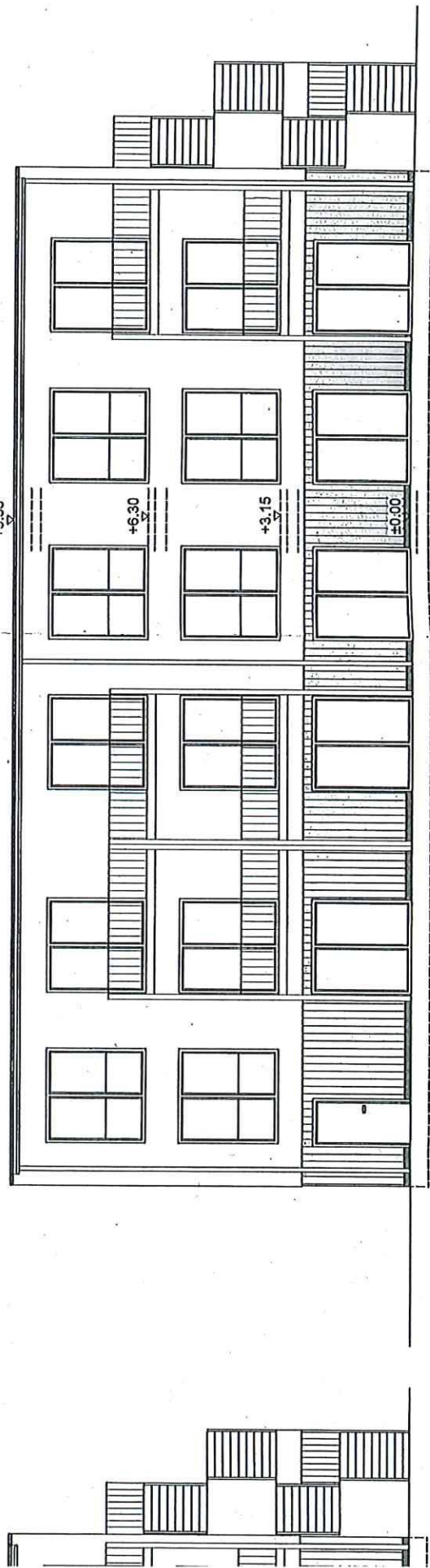




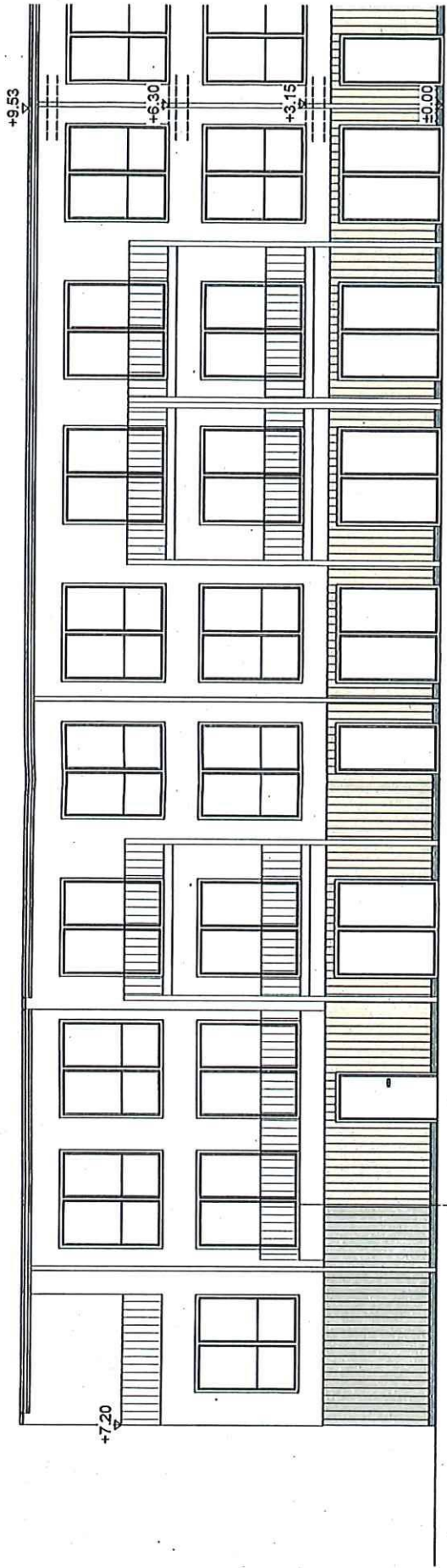




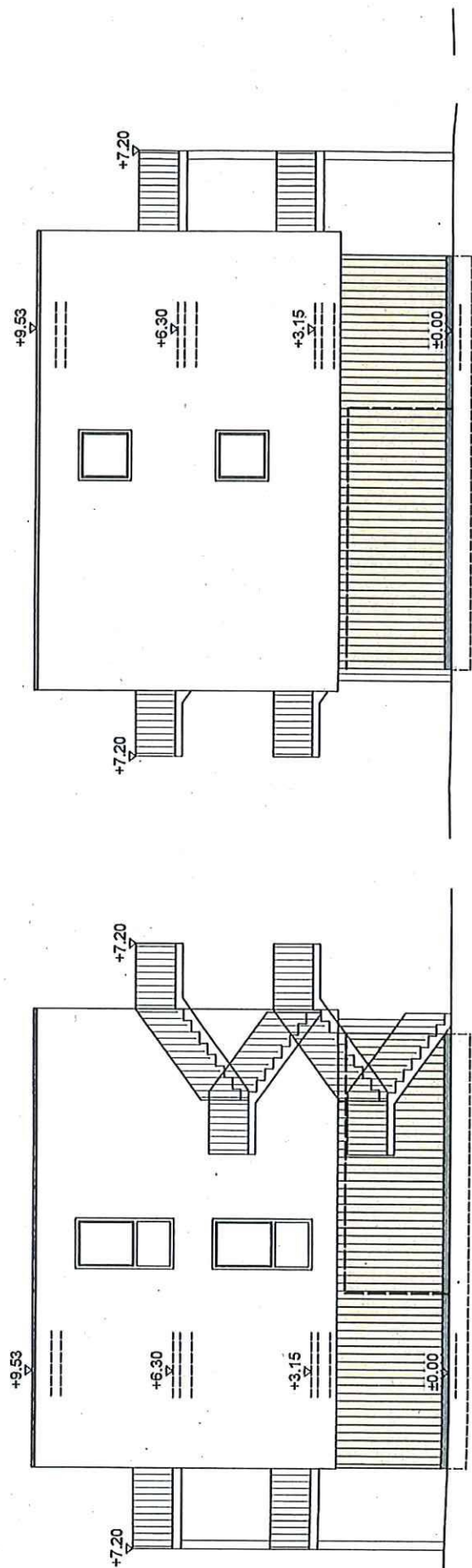
NORDEN HAUS 1+4



SÜDEN HAUS 1+4



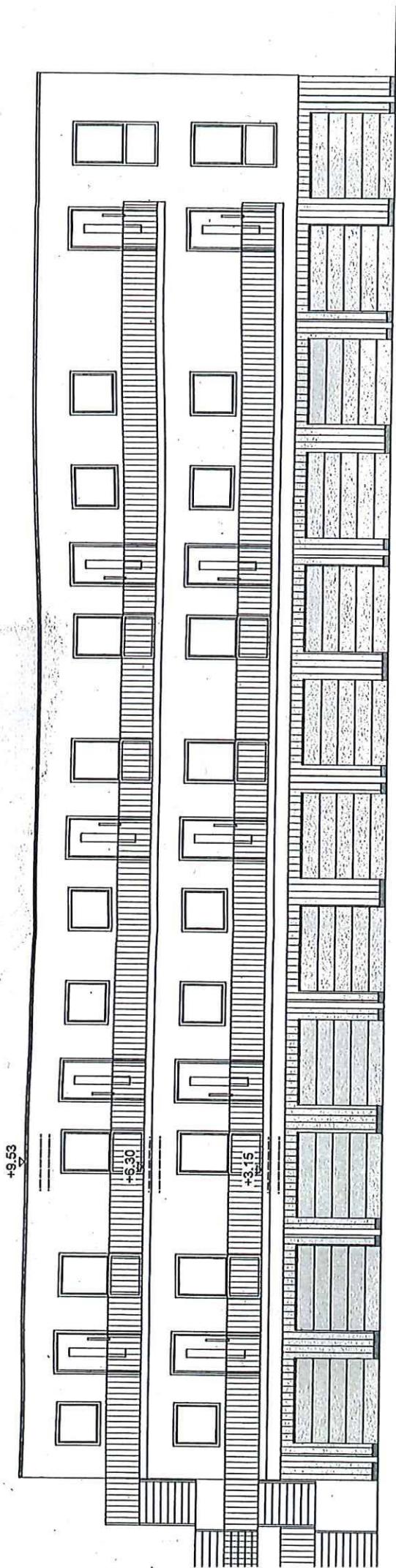
SÜDEN HAUS 2+3



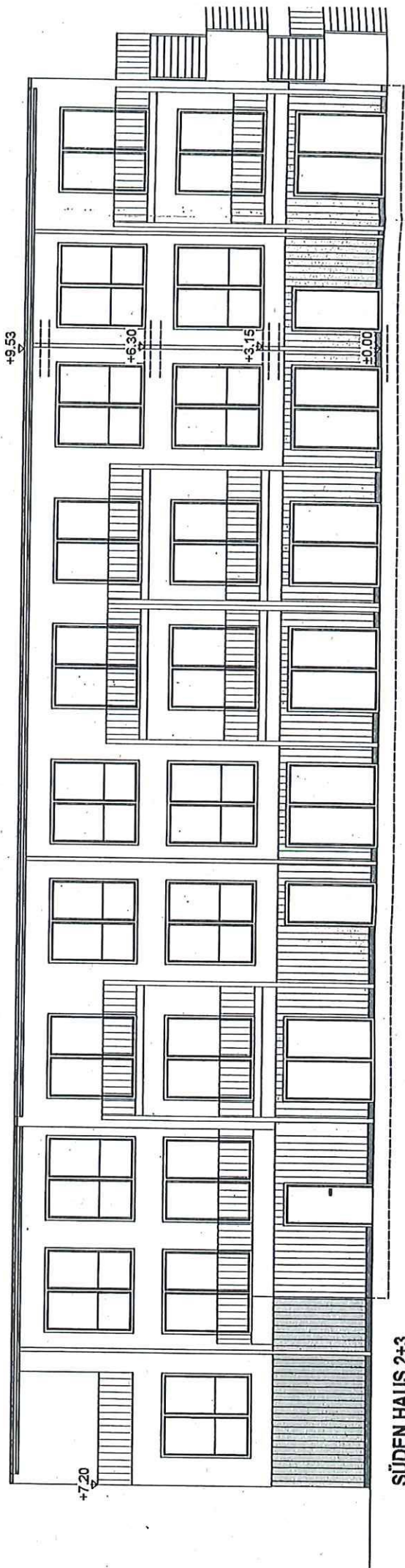
WESTEN HAUS 1+4

OSTEN HAUS 1-4





NORDEN HAUS 2+3



SÜDEN HAUS 2+3

